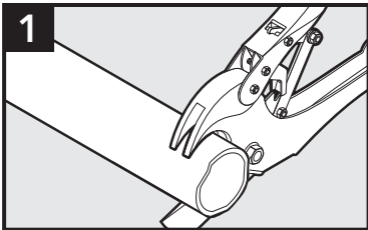
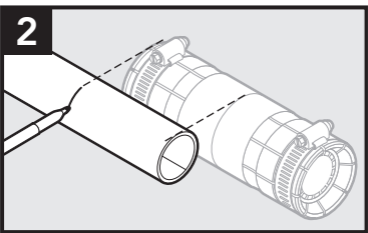


Shur-Lock II

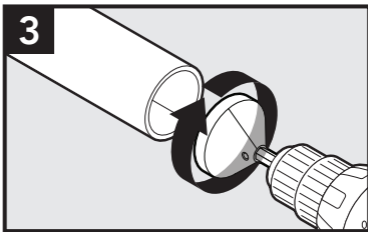
Installation Instructions



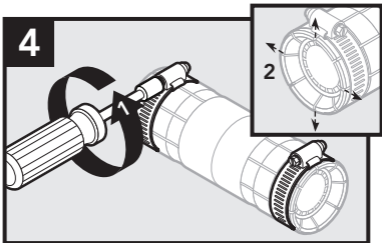
Cut conduit flush with duct cutters.



Overlap ends of conduit. Place duct at center of coupler and mark end.

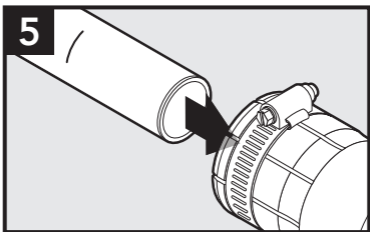


Chamfer the end to allow for smooth insertion.

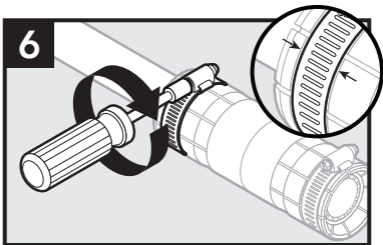


Loosen the band clamps to allow spreading of the split segments on the end of the coupler during insertion.

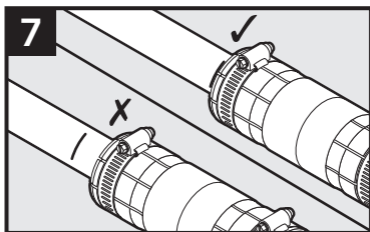
Installation Instructions



Push conduit into coupler past the metal teeth to the mark to ensure O-ring is seated around the duct.



Verify the band clamp is positioned in the groove and fully tighten it down with a 5/16" nut driver. Never use a drill to tighten clamp.



Repeat process with second piece of duct.

Dura-Line Corporation
11400 Parkside Drive, Suite 300
Knoxville, TN 37934



dura-line